

arkhalumen

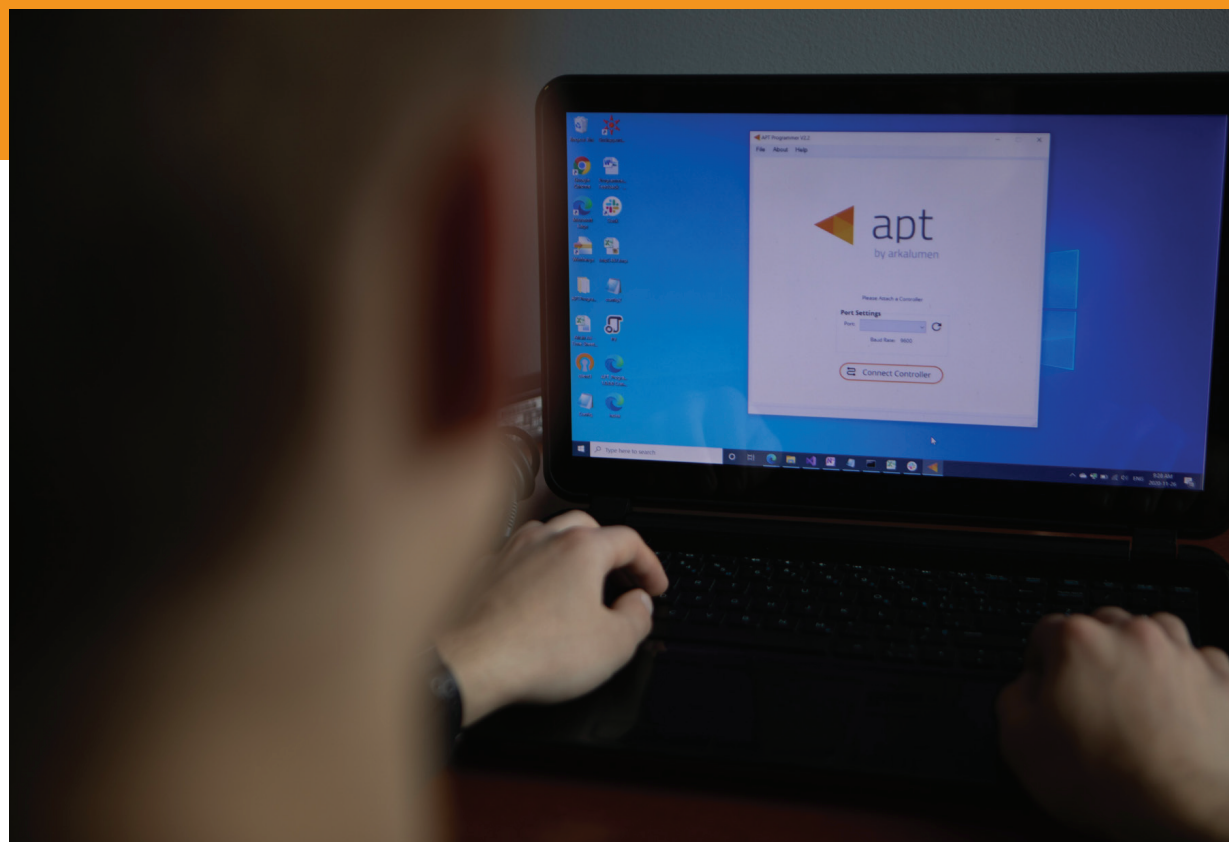


apt

APT Programmer  
Programming Guide - Engineering  
APT-CV2-VA-LN

# Table of Contents

Connecting the APT Programmer.....	1
Using the APT Programmer .....	1
Using the Programmer Interface Window .....	2
Basic Tab.....	3
Advanced Tab.....	4
CCT Range Tab.....	5
CCT Mapping Tab .....	6
INT Mapping Tab .....	8
Generating Labels .....	10
Generating a Report.....	11



# Connecting the APT Programmer

- 1 Connect the APT Programmer to the PC and controller as shown in Figure 1.

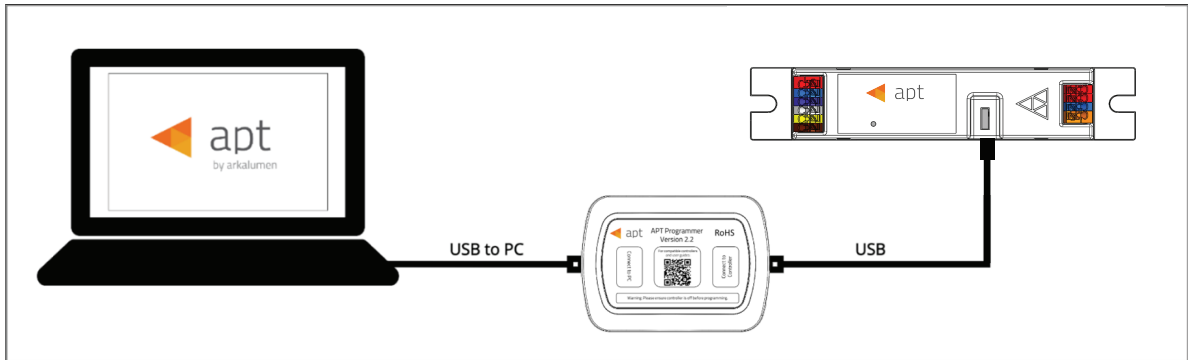



Figure 1: Wiring Diagram

# Using the APT Programmer

## Installing the APT Programmer Interface

- 1 Click on the provided link to download the **APT Programmer Interface** folder.
- 2 Open the folder **APT Programmer Interface** on a Windows-based PC, and select the file **setup.exe**
- 3 Launch **setup.exe** to install the APT Programmer Interface. The APT Programmer Interface shortcut will be added to the Start Menu.

## Running the APT Programmer Interface

- 1 Launch the APT Programmer Interface software by selecting the application, **APT Programmer Interface**, from the Start Menu. The Programmer Connect window (shown in Figure 2) will open.
- 2 Select the COM port to which the APT Programmer is connected from the **Port** drop-down menu. If a COM port is not visible, click the  button until the correct port is visible.
- 3 Click **Connect Controller** to establish a connection. Once connected, the APT Programmer Interface window (shown in Figure 3) will open.

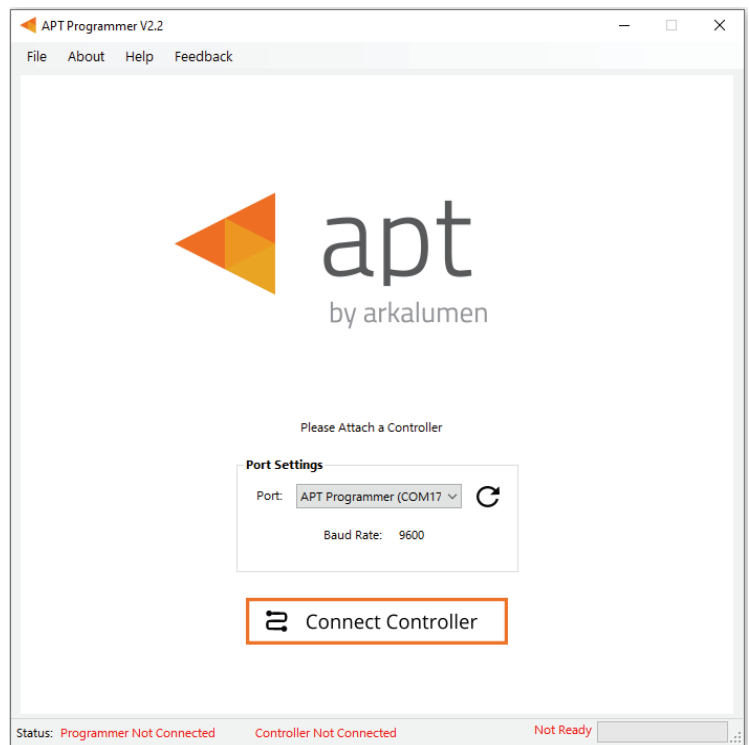


Figure 2: Programmer Connect window

Note: Once connected, if the APT Programmer is not displayed in the port list, please run the CDM212364\_Setup file sent with the APT Programmer software to install the drivers.

# Using the Programmer Interface Window

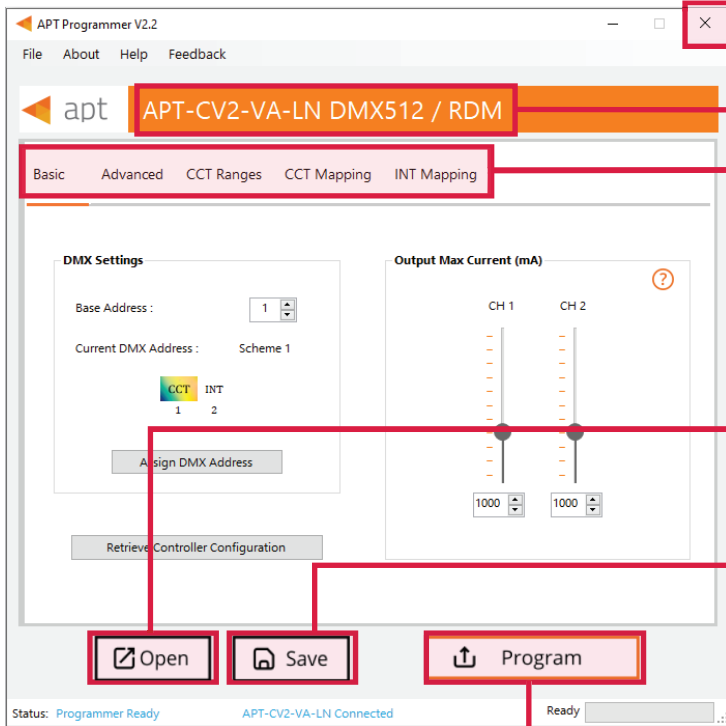


Figure 3: Programmer Interface window

Exit the APT Programmer Interface by either clicking **x**, pressing **Ctrl+Q** or selecting **File > Exit**. This will open a window with the option to save the current configuration.

*Note: Clicking **No** will discard all unsaved configurations.*

Displays the connected APT Controller.

Navigate through settings quickly by clicking on the tabs.

Open a previously saved configuration file (.ARKENC) by either clicking **Open**, pressing **Ctrl+O** or selecting **File > Open** from the menu.

Save the current configuration by either clicking **Save**, pressing **Ctrl+S** or selecting **File > Save** as from the menu. A .txt file is created with a readable summary of the saved configurations and a .ARKENC file which is used to upload the saved configurations to the APT Programmer User Interface or to APT the Production Programmer.

When satisfied with the configuration, click **Program** to program the controller.

The progress bar displays the status of the current task.



Displays **Programmer Ready** if the APT Programmer Interface has successfully connected to the APT Programmer. If no connection has been established, it will read **Programmer Not Connected**.

Displays the currently connected APT Controller and its hardware version. If no connected APT controller is found, it will read **Controller Not Connected**.

The Ready field in the Status Bar displays:

- Ready
- Not Ready
- Successfully Programmed
- Retrieve Successful
- Wrong Controller Connected
- No Controller Identified

Figure 4: Programmer Interface window - Status Bar at bottom of window of Fig 3

# Basic Tab

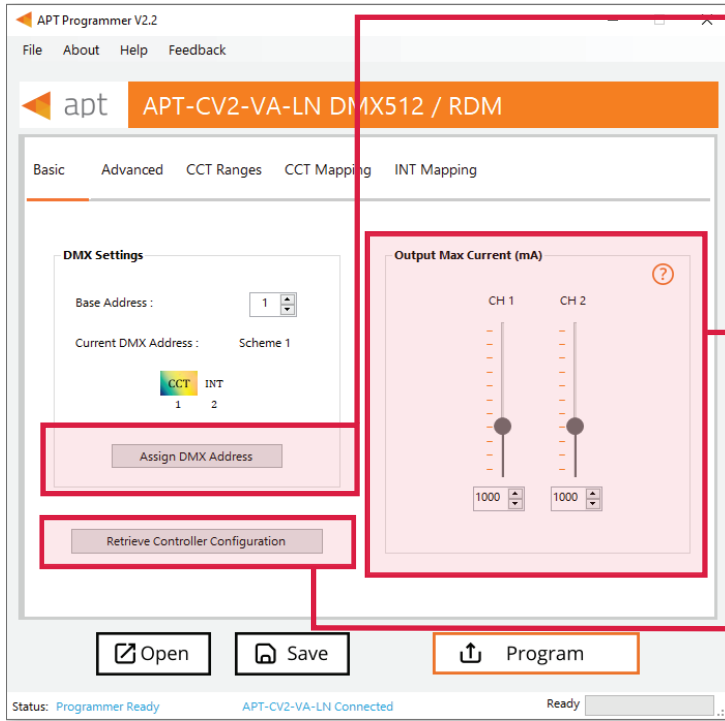


Figure 5: Programmer Interface window - Basic tab

Click **Assign DMX Address** to change the assignment of addresses to different output channels and/or calibrate control levels for CCT and master intensity (shown in Figure 6).

*Note: The DMX base address and DMX scheme may be changed using RDM after the controller is installed in the field.*

**Output Max Current (mA)** specifies the maximum current output of the two output channels of the APT Controller.

*Note: Ensure these values are below the maximum allowable current of the output channels on the light engines to prevent damage to the LEDs.*

Click **Retrieve Controller Configuration** to view the currently programmed configurations of the connected controller. A separate window will open with the controller's configuration (shown in Figure 7).

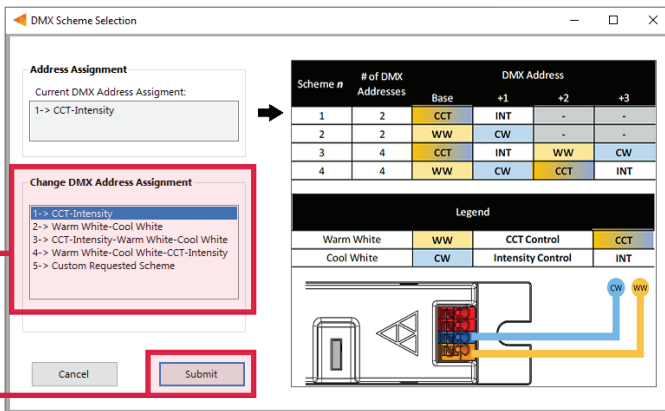


Figure 6: DMX Scheme Selection window

Select the desired DMX Address Assignment scheme from the list and click **Submit** to update the desired DMX Address Assignment in the basic tab.

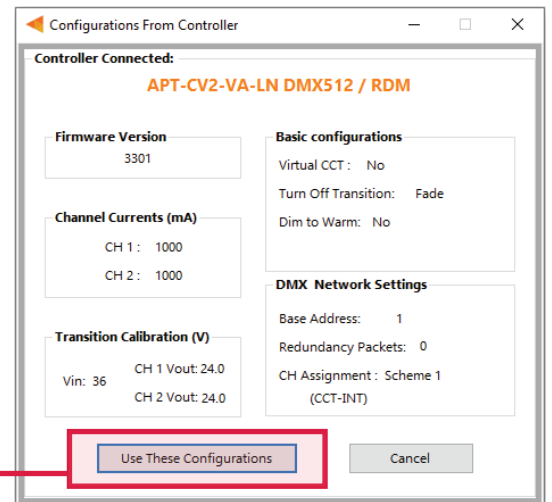


Figure 7: Configurations from Controller window

Click **Use These Configurations** to import the controller's current configuration into the APT Programmer Interface.

*Note: All APT Programmer Interface settings will be changed to the controller's current configuration.*

# Advanced Tab

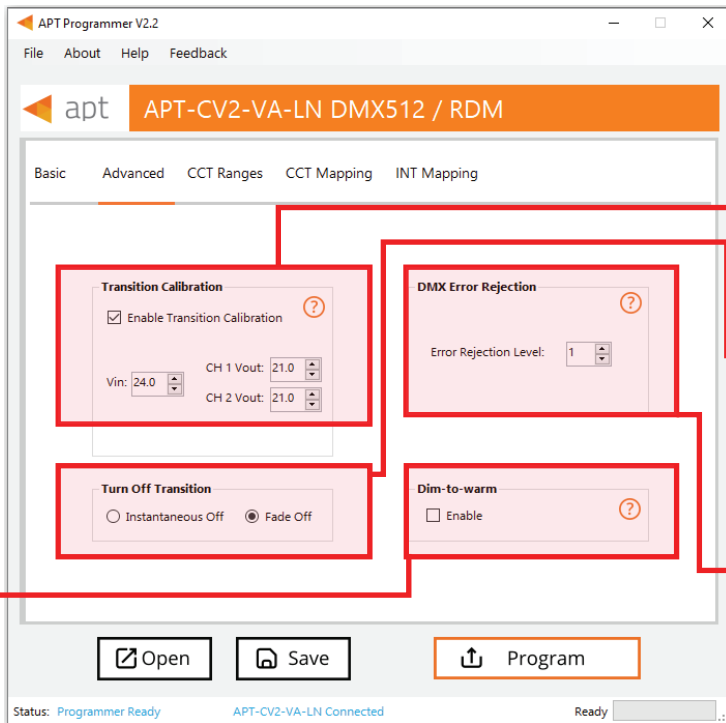


Figure 8: Programmer Interface window - Advanced tab

## Enabling Dim-to-Warm

**Dim-to-Warm** feature is only available when Intensity-CCT is selected as the control feature.

- 1 Click the box to enable **Dim-to-Warm**. When dimming LEDs, the calibrated correlated color temperature (CCT) does not change. The Dim-to-Warm feature imitates the effect of halogen lamps, which get warmer when dimmed. Note: Use of a 2 channel is required.
- 2 Go to **CCT Mapping Tab** to upload Dim-to-Warm transition table between cool and warm light.

## Transition Calibration

- 1 Select the **Enable Transition Calibration** checkbox.
- 2 Input the driver voltage and the voltage of each of the output channels to optimize the fading behaviour of the controller.

## Turn Off Transition

Select either an instantaneous or fade transition when fully turning off the LEDs.

## DMX Error Rejection Level

Enter the **Error Rejection Level**, ranging from 0 to 16, to set the number of consistent DMX packets required to make a change.

*Note: Values of 0 or 1 are recommended for general use. Higher values are recommended for high interference situations, or when DMX values change rapidly or often.*

# CCT Ranges Tab

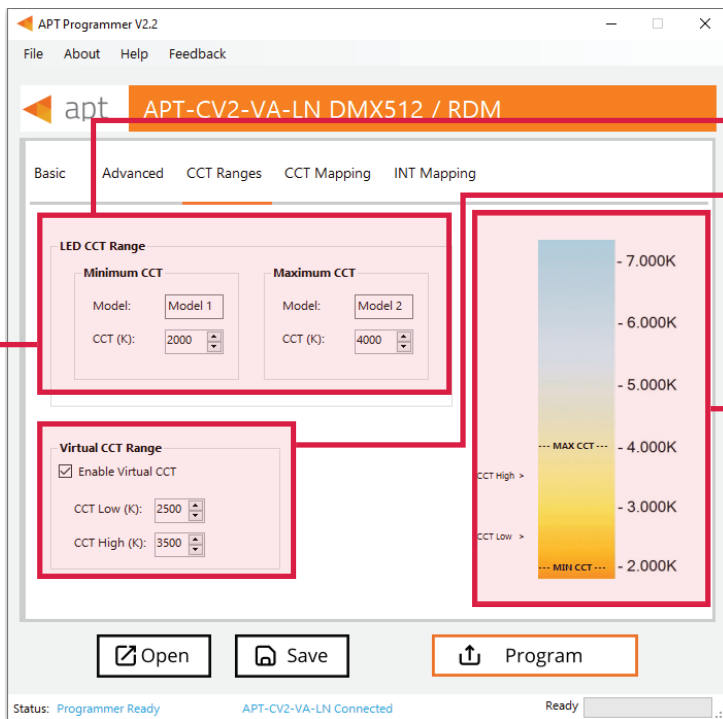


Figure 9: Programmer Interface window - CCT Ranges tab

Enter the LED **Model** numbers associated with the minimum and maximum CCT to add further information for the generated report.

## Setting a virtual (custom) CCT range

- 1 Enter the **LED CCT Range** using the **Minimum CCT** and **Maximum CCT** values supported by the connected LED module.

*Note: The current settings will be shown as **MIN CCT** and **MAX CCT** in the right-hand column.*

- 2 Click the box to enable **Virtual CCT**.
- 3 Enter **CCT low** and **CCT high** values.

*Note: **CCT low** must be greater than or equal to **Minimum CCT**, while **CCT high** must be less than or equal to **Maximum CCT**.*

*The selection will be shown as **CCT Low** and **CCT High** in the column on the right-hand side of the Programmer Interface window.*

*Note: If enabled, the **Virtual CCT Range** takes precedence over the **LED CCT Range**.*

# CCT Mapping Tab

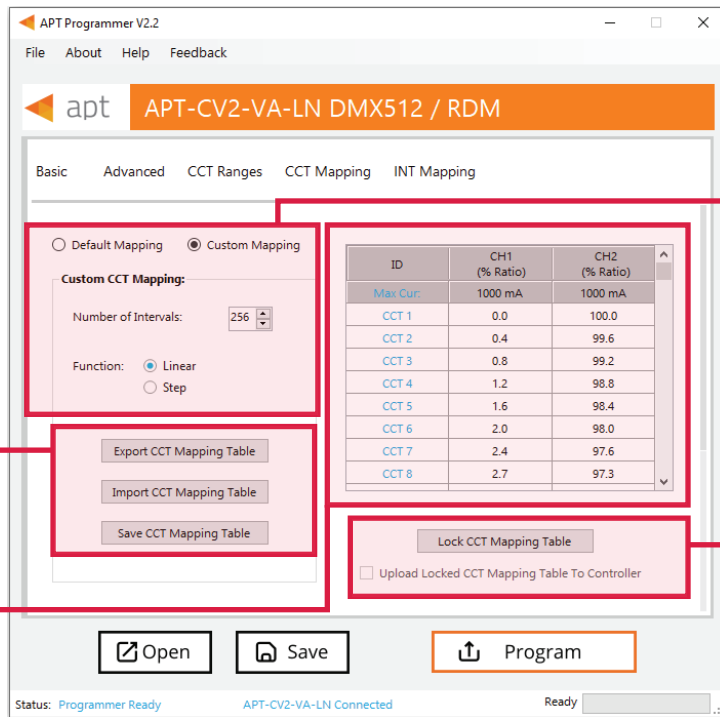


Figure 10: Programmer Interface window - CCT Mapping tab

Displayed in the table, each CCT value is mapped to a percentage ratio for the particular channel ranging from minimum (0%) to maximum (100%). Default mapping evenly spreads out 256 values along a linear curve in which CH1 increases from 0% to 100% and CH2 decreases from 100% to 0%. Click the box to enable Default Mapping.

Enable **Import**, **Export**, or **Save** of the CCT Mapping Table by selecting button. Detailed steps on page 7.

## Uploading CCT Custom Mapping

- 1 Select a DMX Scheme that includes the controller's CCT in the **Basic Tab**.
- 2 Click the **Custom Mapping** button in the **CCT Mapping** tab.
- 3 Enter the number of CCT Intervals, ranging from 2 to 256.
- 4 Select either **Linear** or **Step** function. Linear will create a CCT mapping with linear transitions between each interval point. Step will create a CCT mapping with step transitions between each interval point.
- 5 Add the values into the table to enter a percentage CCT ratio for either **CH1** or **CH2**.

*Note: Reselecting **Default Mapping** will open a window with option to save current custom mappings.*

Click **Lock CCT Mapping Table** to prevent changes from being made to the mapping table, this will also update the graph (shown in Figure 11).

*Tip: Scroll to the bottom of the window to see the graph (Figure 11) of the current mapping configuration.*

Click the **Upload Locked CCT Mapping To Controller** box to upload the mapping table when clicking **Program**.

Click **Unlock CCT Mapping Table**, when the mapping table is locked, to make changes to the table.

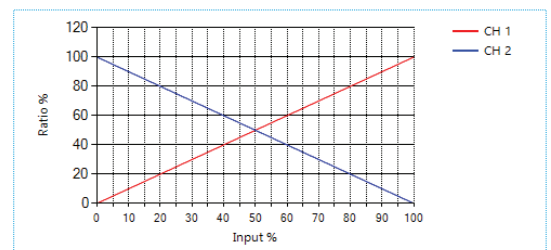


Figure 11: CCT mapping graph



## Using Excel to Customize the mapping table

- 1 Click **Export Mapping Table** to generate a spreadsheet containing the mapping table that is currently open.
- 2 Modify the mapping table directly in the spreadsheet, make sure all editable cells contain a value.
- 3 Save the spreadsheet (.xlsx).

## Saving the mapping table

- 1 Click **Save Mapping Table** to save the current mapping table.
- 2 Find a save location for the generated spreadsheet file (.xlsx) containing the mapping table that is currently open.
- 3 Name and save the file to the desired location.

## Importing a previously saved mapping table

- 1 Click **Import Mapping Table** to open a previously saved mapping table in the APT Programmer Interface.
- 2 Select a previously saved mapping table spreadsheet file (.xlsx) in the file browser.
- 3 Click **Open** in the file browser, to import the file. If the spreadsheet is formatted correctly, it will be successfully imported otherwise an error message will be displayed and the file will not be imported.

# INT Mapping Tab

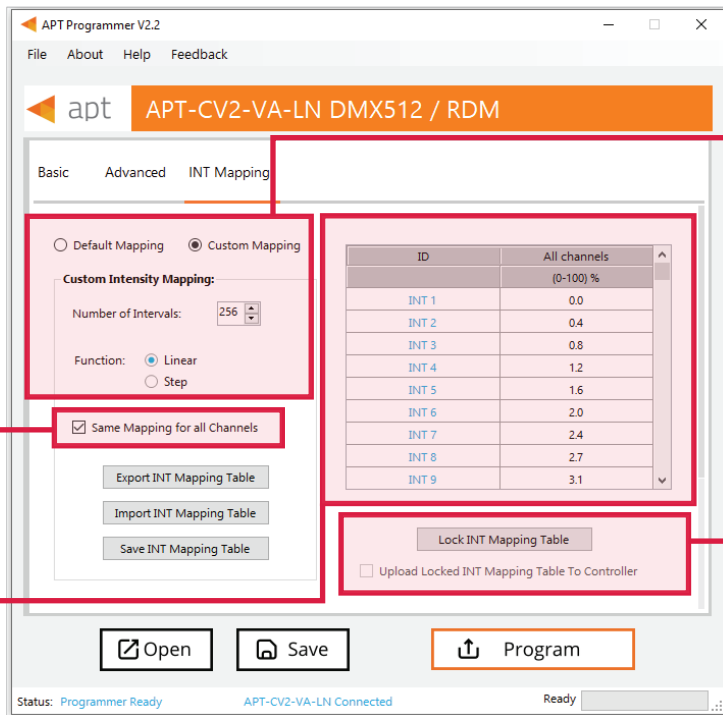


Figure 12: Programmer Interface Window - INT Mapping Tab

Displayed in the table, each INT value is mapped to a percentage of the maximum current for the particular channel ranging from minimum (0%) to maximum (100%). Default mapping evenly spreads out 256 values along a linear curve in which both CH1 and CH2 increase from 0% to 100%. Click the box to enable Default Mapping.

ID	CH1 (% Ratio)	CH2 (% Ratio)
Max Cur	1000 mA	1000 mA
INT 1	0.0	0.0
INT 2	0.4	0.4
INT 3	0.8	0.8
INT 4	1.2	1.2
INT 5	1.6	1.6
INT 6	2.0	2.0
INT 7	2.4	2.4
INT 8	2.7	2.7

Figure 13: INT Mapping Tab - Same Mapping for all Channels Unchecked

Figure 13 displays the INT Mapping table when the checkbox **Same Mapping for all Channels** is unchecked, allowing INT mapping for each Channel individually.

## Uploading Intensity Mapping for Individual Channel control

- 1 Select a DMX scheme that includes **Individual Channel Control** in the **Basic Tab**.
- 2 Click the **Custom Mapping** button in the **INT Mapping** tab.
- 3 Enter the number of Intensity intervals, ranging from 2 to 256.
- 4 Select either **Linear** or **Step function**. Linear will create a INT mapping with linear transitions between each interval point. Step will create an INT mapping with step transitions between each interval point.

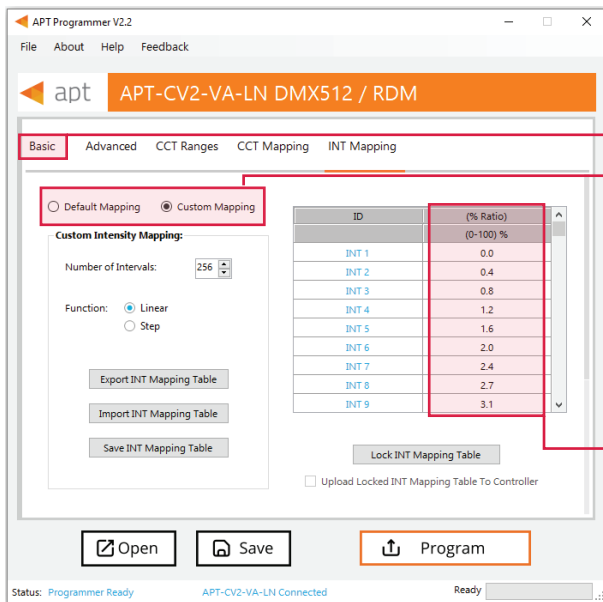
*Tip: Click the **Same Mapping for All Channels** box to make the INT mappings identical for all channels CH1/CH2.*

- 5 Add the values into the table to enter a percentage of the maximum current for either **CH1** or **CH2**.  
*Note: Reselecting **Default Mapping** will open a window with the option to save the current custom mappings.*

Click **Lock INT Mapping Table** to prevent changes from being made to the mapping table.

Click the **Upload Locked INT Mapping Table To Controller** box to upload the mapping table when clicking **Program**.

Click **Unlock INT Mapping Table**, when the mapping table is locked, to make changes to the table.



## Uploading INT Mapping for the intensity of CCT

- 1 Select a DMX Scheme that only includes CCT-INT in the Basic Tab.
- 2 Click the Custom Mapping button in the INT Mapping tab.
- 3 Enter the number of intensity intervals, ranging from 2 to 256.
- 4 Select either Linear or Step function. Linear will create an INT mapping with linear transitions between each interval point. Step will create an INT mapping with step transitions between each interval point.
- 5 Add the values into the table to enter an intensity ratio for the CCT.

Figure 14: INT Mapping Tab when selected DMX Scheme only includes CCT-INT.

When selecting a DMX Scheme that has both Individual Channel Control and CCT-INT

- 1 Select a DMX Scheme includes Individual Channel Control and CCT-INT in the Basic Tab.
- 2 Click the Custom Mapping button in the INT Mapping tab.
- 3 Check Enable CCT Intensity Mapping.
- 4 Enter the number of intensity intervals, ranging from 2 to 256.
- 5 Select either Linear or Step function. Linear will create an INT mapping with linear transitions between each interval point. Step will create an INT mapping with step transitions between each interval point.

*Note: If Same Mapping for all Channels is checked, then the All Channels column of the table will be used to upload the INT mapping for the intensity of the CCT shown in Figure 15a.*

*If Same Mapping for all Channels is unchecked, then the CH1 column of the table will be used to upload the INT mapping for the intensity of the CCT shown in Figure 15b.*

- 6 Add the values into the table to enter an intensity ratio for the CCT.

*Note: Reselecting Default Mapping will open a window with the option to save the current custom mappings.*

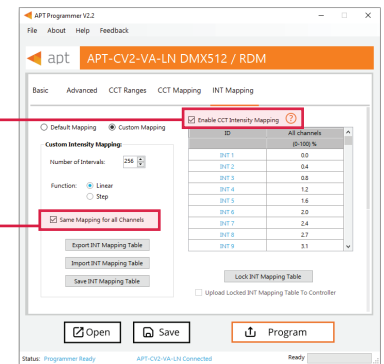


Figure 15a: Same Mapping for All Channels checked

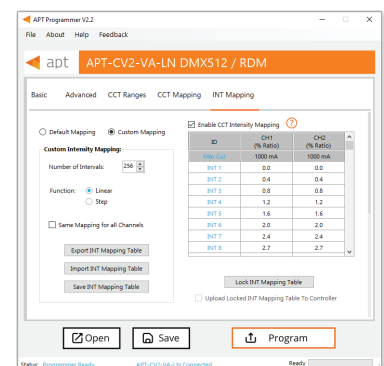


Figure 15b: Same Mapping for All Channels unchecked

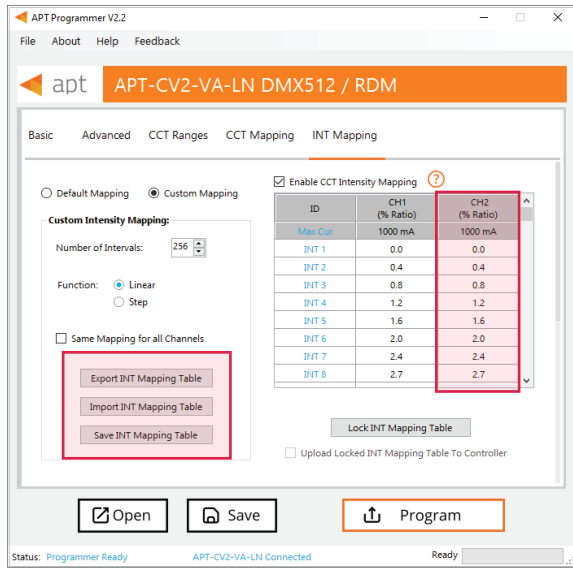


Figure 16: INT Mapping Tab - Uploading Intensity of CCT when Same Mapping for All Channels is unchecked

## Using Excel to Customize the INT mapping table

- 1 Click **Export INT Mapping Table** to generate a spreadsheet containing the mapping table that is currently open.
- 2 Modify the mapping table directly in the spreadsheet without changing the formatting.
- 3 Save the spreadsheet (.xlsx).

## Saving the INT mapping table

- 1 Click **Save INT Mapping Table** to save the current mapping table.
- 2 Find a save location for the generated spreadsheet file (.xlsx) containing the mapping table that is currently open.
- 3 Name and save the file in the desired location.

## Importing a previously saved INT mapping table

- 1 Click **Import INT Mapping Table** to open a previously saved mapping table in the APT Programmer Interface.
- 2 Select a previously saved mapping table spreadsheet file (.xlsx) in the file browser.
- 3 Click **Open** in the file browser to import the file; if the spreadsheet is formatted correctly, it will be successfully imported.

*Tip: Scroll to the bottom of the window to see graphs (shown in Figures 17, 18, and 19) of the current INT mapping configuration.*

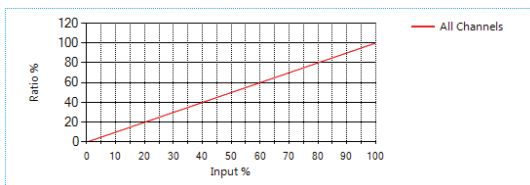


Figure 17: INT Mapping graph for all channels

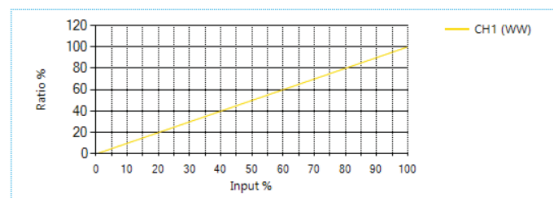


Figure 19: INT Mapping graphs for each channel

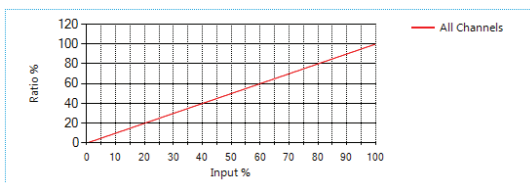


Figure 18: INT Mapping graph for the Intensity of the CCT

# Generating Labels



Figure 20: Label Generation window

- 1 Select **File > Generate Label** or press **Ctrl +L** to open the Label Generation window (shown in Figure 20).
- 2 Input the 4-digit **ID Number** written on the original label (shown in Figure 20). The ID Number indicates the production build of the APT Controller.
- 3 Click **Generate Labels**.
- 4 Input the starting and finishing rows and columns that will fit on the back or front labels. The selected range is highlighted in blue (Figure 21).
- 5 Select **Print Full Range** to print the whole page.
- 6 Click **Generate Labels**, the default web browser will open and display a preview of the print.

*Note: Arkalumen recommends using Google Chrome and setting margins to **None** in the printing options.*



To obtain blank labels, contact Arkalumen or visit [onlinelabels.com](https://www.onlinelabels.com)  
Labels: <https://www.onlinelabels.com/products/ol1930lp>  
When ordering, Arkalumen recommends selecting Weatherproof Polyester labels in a material suited for your printer.

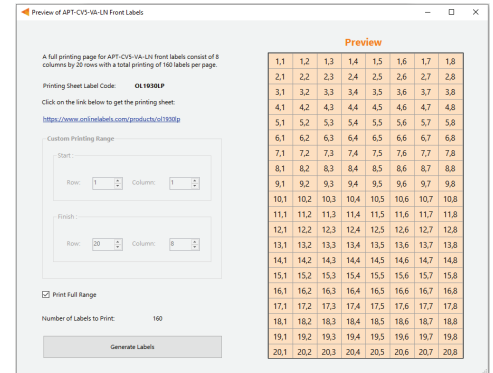


Figure 21: Label generation print preview window

# Generating a Report

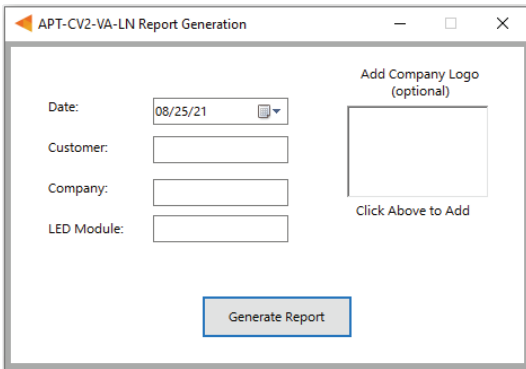


Figure 22: Report Generation window

- 1 Select **File > Generate Report**, or press **Ctrl+R**, to open the Report Generation Window (shown in Figure 22).
- 2 Enter the **Date, Customer, Company, and Light Engine** part number to customize the report.
- 3 Click on the white box under **Add Company Logo** to include a logo in the report (*optional*).
- 4 Select the desired logo (.jpg) in the file browser and click **Open** (*optional*).
- 5 Click **Generate Report**, the default web browser will open and display a preview of the print (shown in Figures 23& 24).

*Note: Arkalumen recommends using Google Chrome and setting margins to **None** in the printing options.*

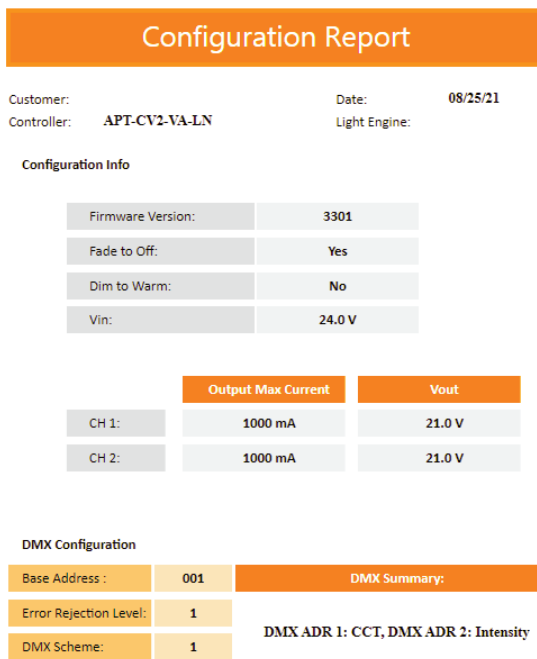


Figure 23: Example of the first page of a generated report

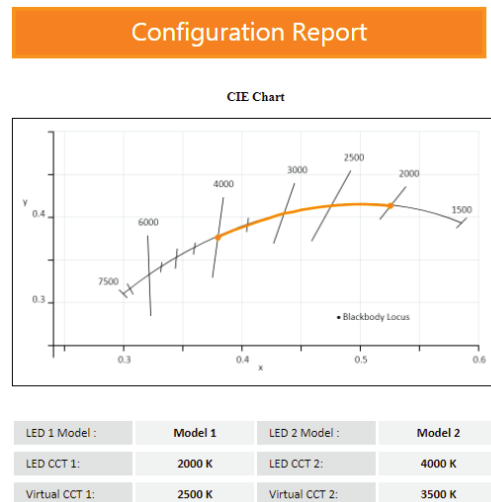


Figure 24: Example of the second page of a generated report



If at any time you have comments or suggestions regarding the APT Programmer or APT Controller, please click on the **Feedback** tab in the top menu bar to submit information to our team. We appreciate all feedback and are committed to continuously improving our products. For immediate support, please contact the Arkalumen team at 1-877-856-5533 or email [support@arkalumen.com](mailto:support@arkalumen.com)

**Arkalumen** designs and manufactures intelligent LED controllers and custom LED modules for light fixture manufacturers in order to enable energy efficient and feature rich lighting solutions. For over 10 years, **Arkalumen** has focused on simple, flexible, cost effective solutions that allow highly differentiated fixtures to be launched in commercial, industrial, and residential markets. With 30+ patents, we have a history of driving innovation within the lighting industry and are proud to push the limits of what lighting in applications in education, healthcare, film and horticulture can be.

Proudly engineered and assembled in North America.

Visit [Arkalumen.com](https://www.arkalumen.com) to see our full product portfolio



For any further support please contact Arkalumen  
[support@arkalumen.com](mailto:support@arkalumen.com)  
toll free at 1.877.865.5533

# arkalumen

[Arkalumen.com](https://www.arkalumen.com)

Rev: 1 Edited: August 19th 2022