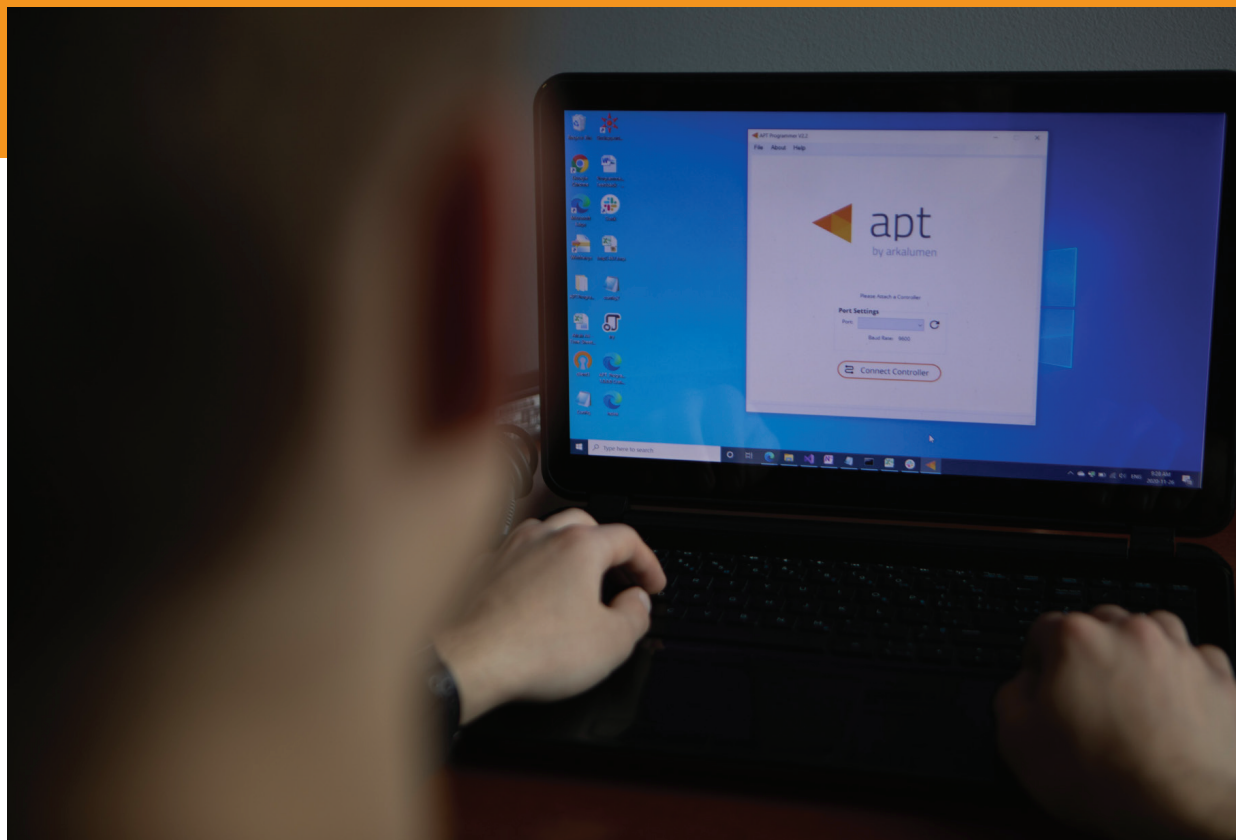




APT Programmer
Programming Guide
APT-CV4-VA-LN-CVO

Table of Contents

Connecting the APT Programmer.....	1
Using the APT Programmer	1
Using the Programmer Interface Window	2
Basic Tab.....	3
Advanced Tab.....	4
INT Mapping Tab	5
Generating Labels	7
Generating a Report.....	8



Connecting the APT Programmer

- 1 Connect the APT Programmer to the PC and controller as shown in Figure 1.

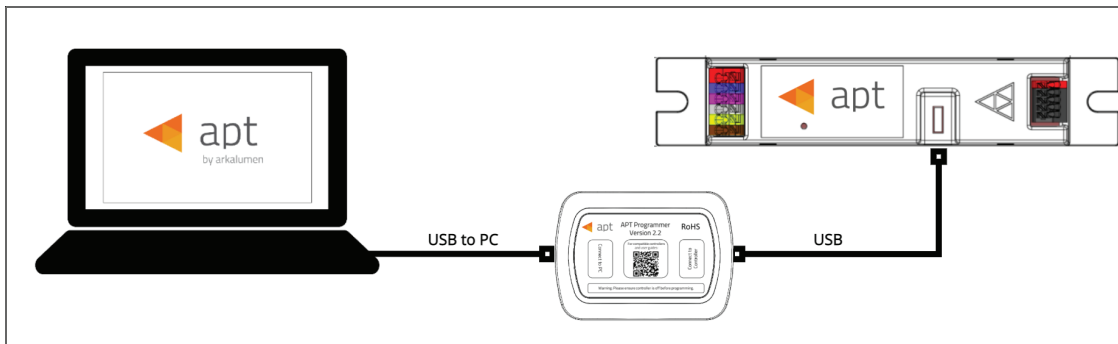



Figure 1: Wiring Diagram

Using the APT Programmer

Installing the APT Programmer Interface

- 1 Click on the provided link to download the **APT Programmer Interface** folder.
- 2 Open the folder **APT Programmer Interface** on a Windows-based PC, and select the file **setup.exe**
- 3 Launch **setup.exe** to install the APT Programmer Interface. The APT Programmer Interface shortcut will be added to the Start Menu.

Running the APT Programmer Interface

- 1 Launch the APT Programmer Interface software by selecting the application, **APT Programmer Interface**, from the Start Menu. The Programmer Connect window (shown in Figure 2) will open.
- 2 Select the COM port to which the APT Programmer is connected from the **Port** drop-down menu. If a COM port is not visible, click the  button until the correct port is visible.
- 3 Click **Connect Controller** to establish a connection. Once connected, the APT Programmer Interface window (shown in Figure 3) will open.

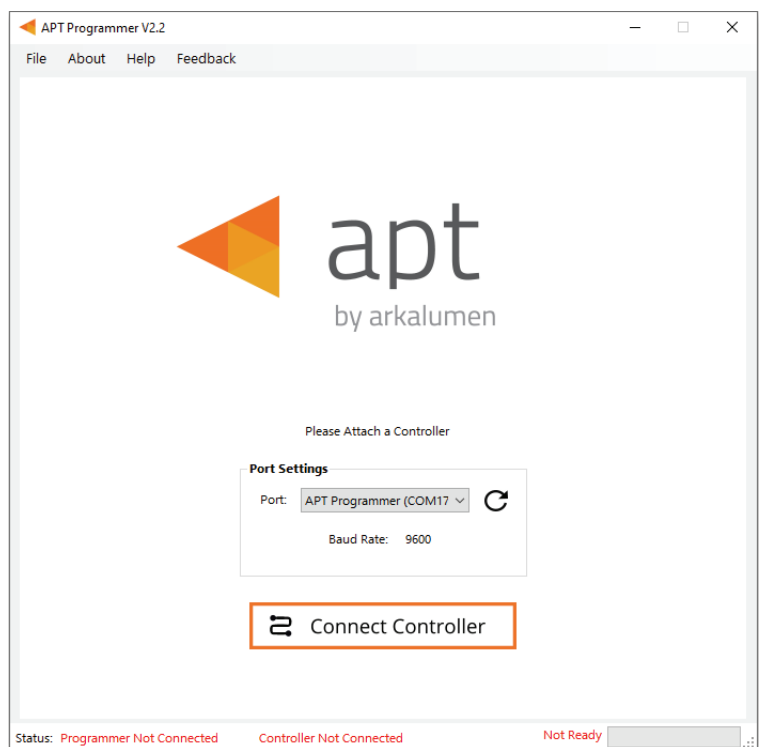


Figure 2: Programmer Connect window

Note: Once connected, if the APT Programmer is not displayed in the port list, please run the CDM212364_Setup file sent with the APT Programmer software to install the drivers.

Using the Programmer Interface Window

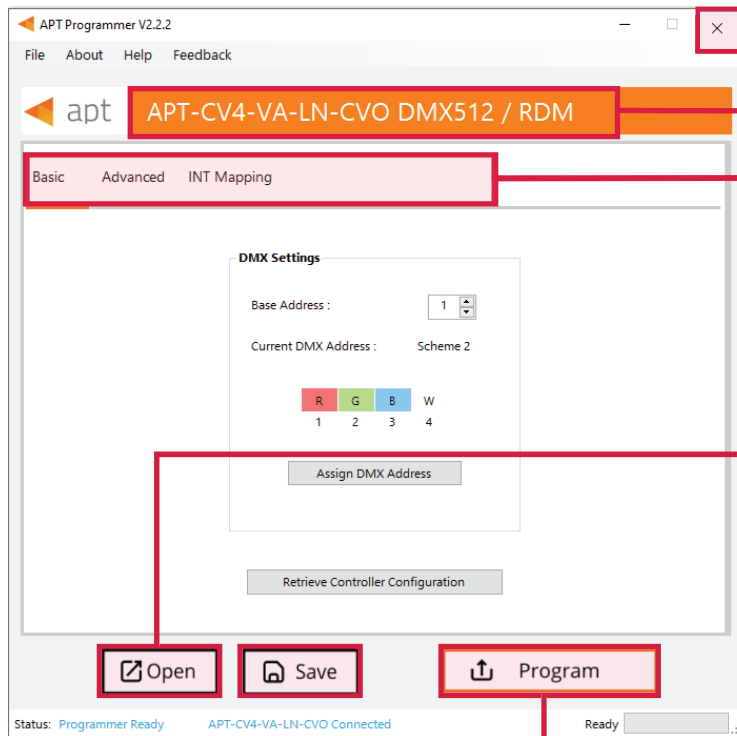


Figure 3: Programmer Interface window

Exit the APT Programmer Interface by either clicking **x**, pressing **Ctrl+Q** or selecting **File > Exit**. This will open a window with the option to save the current configuration.

*Note: Clicking **No** will discard all unsaved configurations.*

Displays the connected APT Controller.

Navigate through settings quickly by clicking on the tabs.

Open a previously saved configuration file (.arkc) by either clicking **Open**, pressing **Ctrl+O** or selecting **File > Open** from the menu.

Save the current configuration by either clicking **Save**, pressing **Ctrl+S** or selecting **File > Save** as from the menu.

When satisfied with the configuration, click **Program** to program the controller.

The progress bar displays the status of the current task.



Displays **Programmer Ready** if the APT Programmer Interface has successfully connected to the APT Programmer. If no connection has been established, it will read **Programmer Not Connected**.

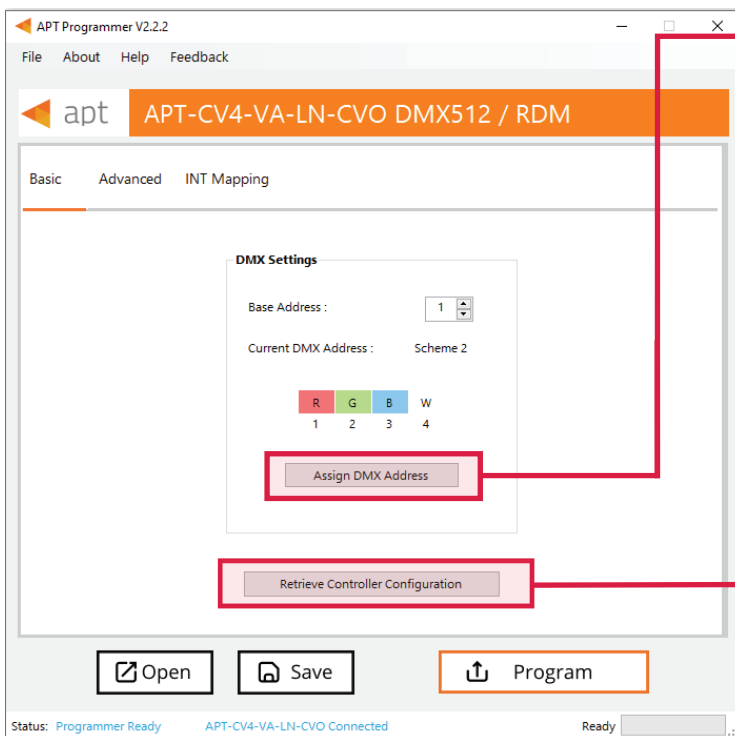
Displays the currently connected APT Controller and its hardware version. If no connected APT controller is found, it will read **Controller Not Connected**.

The Ready field in the Status Bar displays:

- Ready
- Not Ready
- Successfully Programmed
- Retrieve Successful
- Wrong Controller Connected
- No Controller Identified

Figure 4: Programmer Interface window - Status Bar at bottom of window of Fig 3

Basic Tab



Click **Assign DMX Address** to change the assignment of addresses to different output channels (shown in Figure 6).

Note: The DMX base address and DMX scheme may be changed using RDM after the controller is installed in the field.

Click **Retrieve Controller Configuration** to view the currently programmed configurations of the connected controller. A separate window will open with the controller's configuration (shown in Figure 7).

Figure 5: Programmer Interface window - Basic tab

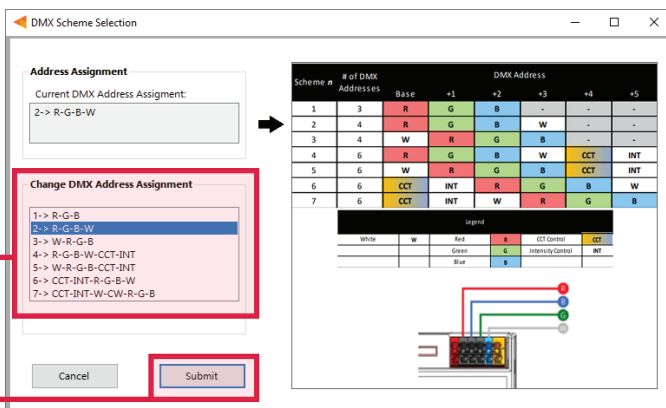


Figure 6: DMX Scheme Selection window

Select the desired DMX Address Assignment scheme from the list and click **Submit** to update the desired DMX Address Assignment in the basic tab.

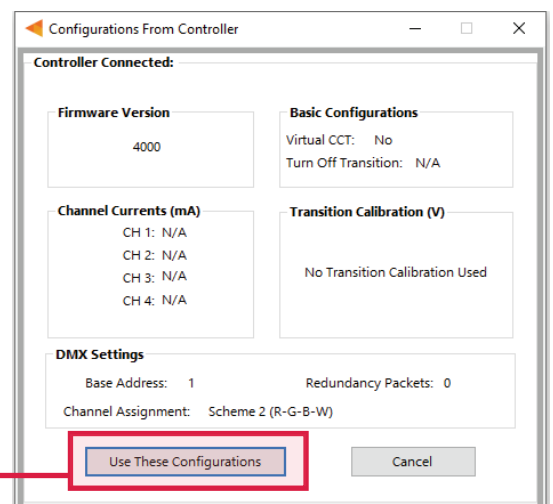
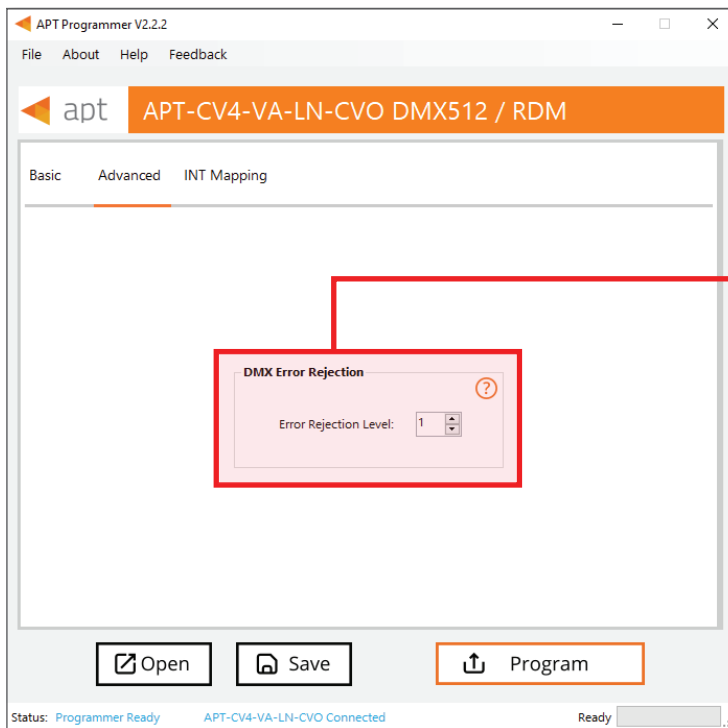


Figure 7: Configurations from Controller window

Click **Use These Configurations** to import the controller's current configuration into the APT Programmer Interface.

Note: All APT Programmer Interface settings will be changed to the controller's current configuration.

Advanced Tab



DMX Error Rejection Level

Enter the **Error Rejection Level**, ranging from 0 to 16, to set the number of consistent DMX packets required to make a change.

Note: Values of 0 or 1 are recommended for general use. Higher values are recommended for high interference situations, or when DMX values change rapidly or often.

Figure 8: Programmer Interface window - Advanced tab

INT Mapping Tab

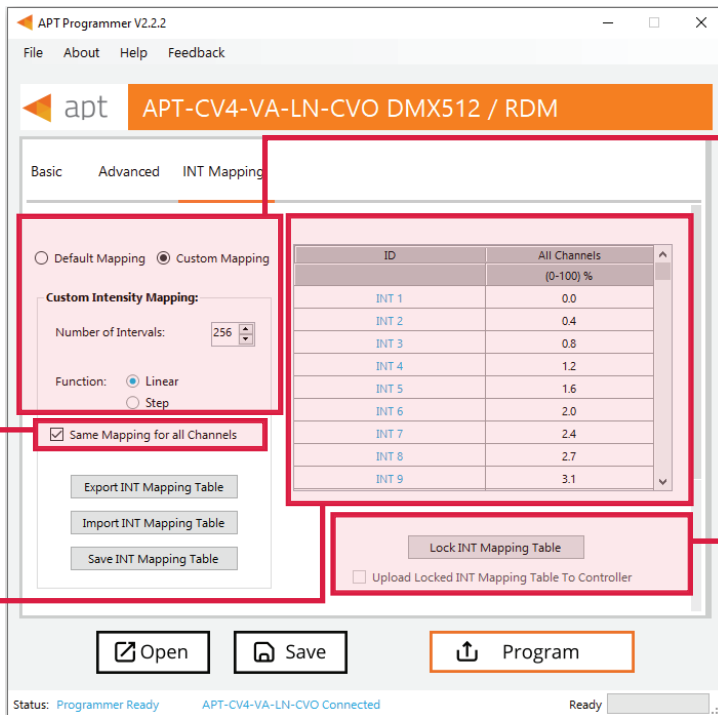


Figure 9: Programmer Interface Window - INT Mapping Tab

Displayed in the table, each INT value is mapped to a percentage ratio for the particular channel ranging from minimum (0%) to maximum (100%). Default mapping evenly spreads out 256 values along a linear curve in which all channels increase from 0% to 100%. Click the box to enable Default Mapping.

ID	CH1-W (% Ratio)	CH2-B (% Ratio)	CH3-G (% Ratio)	CH4-R (% Ratio)
Max Cur	(0-100) %	(0-100) %	(0-100) %	(0-100) %
INT 1	0.0	0.0	0.0	0.0
INT 2	0.4	0.4	0.4	0.4
INT 3	0.8	0.8	0.8	0.8
INT 4	1.2	1.2	1.2	1.2
INT 5	1.6	1.6	1.6	1.6
INT 6	2.0	2.0	2.0	2.0
INT 7	2.4	2.4	2.4	2.4
INT 8	2.7	2.7	2.7	2.7

Figure 10: INT Mapping Tab - Same Mapping for all Channels Unchecked

Figure 10 displays the INT Mapping table when the checkbox **Same Mapping for all Channels** is unchecked, allowing INT mapping for each Channel individually.

Uploading Intensity Mapping for Individual Channel control

- 1 Select a DMX scheme that includes **Individual Channel Control** in the **Basic Tab**.
- 2 Click the **Custom Mapping** button in the **INT Mapping** tab.
- 3 Enter the number of Intensity intervals, ranging from 2 to 256.
- 4 Select either **Linear** or **Step function**. Linear will create a INT mapping with linear transitions between each interval point. Step will create an INT mapping with step transitions between each interval point.

*Tip: Click the **Same Mapping for All Channels** box to make the INT mappings identical for all channels.*

- 5 Add the values into the table to enter a percentage ratio for all channels.

*Note: Reselecting **Default Mapping** will open a window with the option to save the current custom mappings.*

Click **Lock INT Mapping Table** to prevent changes from being made to the mapping table.

Click the **Upload Locked INT Mapping Table To Controller** box to upload the mapping table when clicking **Program**.

Click **Unlock INT Mapping Table**, when the mapping table is locked, to make changes to the table.

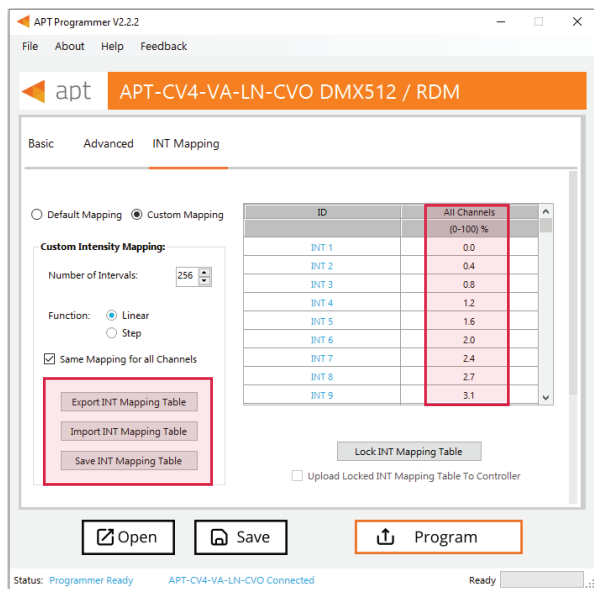


Figure 11: INT Mapping Tab - Uploading Intensity of CCT when Same Mapping for All Channels is unchecked

Using Excel to Customize the INT mapping table

- 1 Click **Export INT Mapping Table** to generate a spreadsheet containing the mapping table that is currently open.
- 2 Modify the mapping table directly in the spreadsheet without changing the formatting.
- 3 Save the spreadsheet (.xlsx).

Saving the INT mapping table

- 1 Click **Save INT Mapping Table** to save the current mapping table.
- 2 Find a save location for the generated spreadsheet file (.xlsx) containing the mapping table that is currently open.
- 3 Name and save the file in the desired location.

Importing a previously saved INT mapping table

- 1 Click **Import INT Mapping Table** to open a previously saved mapping table in the APT Programmer Interface.
- 2 Select a previously saved mapping table spreadsheet file (.xlsx) in the file browser.
- 3 Click **Open** in the file browser to import the file; if the spreadsheet is formatted correctly, it will be successfully imported.

Tip: Scroll to the bottom of the window to see graphs (shown in Figures 12 & 13) of the current INT mapping configuration.

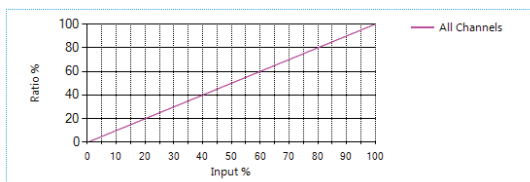


Figure 12: INT Mapping graph for all channels

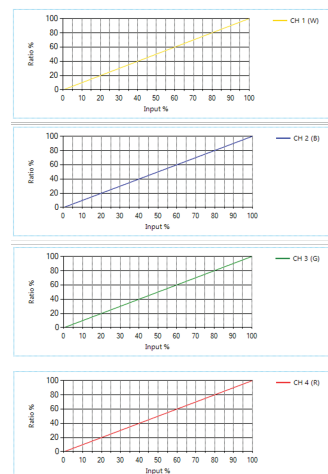


Figure 13: INT Mapping graphs for each channel

Generating Labels

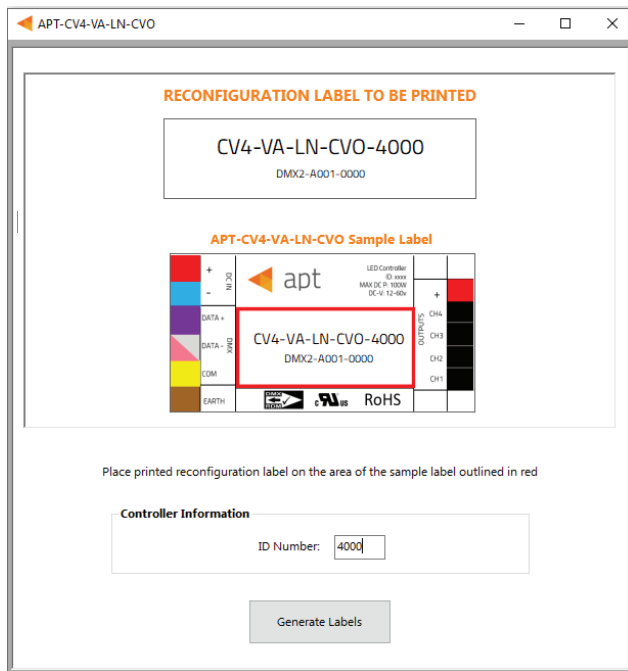


Figure 14: Label Generation window

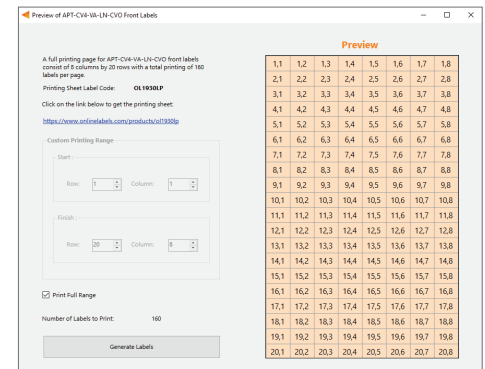


Figure 15: Label generation print preview window

- 1 Select **File > Generate Label** or press **Ctrl +L** to open the Label Generation window (shown in Figure 15).
- 2 Input the 4-digit **ID Number** written on the original label (shown in Figure 14). The ID Number indicates the production build of the APT Controller.
- 3 Click **Generate Labels**.
- 4 Input the starting and finishing rows and columns that will fit on the back or front labels. The selected range is highlighted in blue (Figure 15).
- 5 Select **Print Full Range** to print the whole page.
- 6 Click **Generate Labels**, the default web browser will open and display a preview of the print.

*Note: Arkalumen recommends using Google Chrome and setting margins to **None** in the printing options.*



To obtain blank labels, contact Arkalumen or visit [onlinelabels.com](https://www.onlinelabels.com)
 Labels: <https://www.onlinelabels.com/products/ol1930lp>
 When ordering, Arkalumen recommends selecting Weatherproof Polyester labels in a material suited for your printer.

Generating a Report

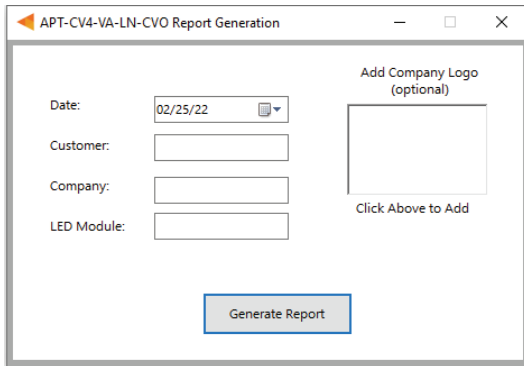
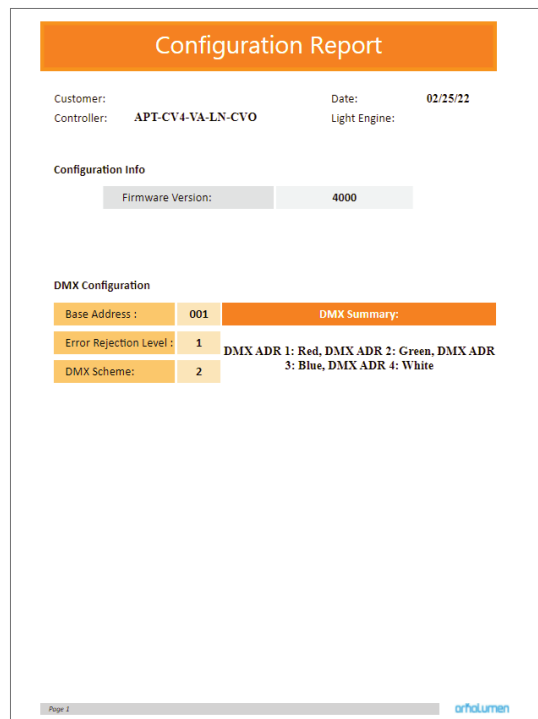


Figure 16: Report Generation window

- 1 Select **File > Generate Report**, or press **Ctrl+R**, to open the Report Generation Window (shown in Figure 16).
- 2 Enter the **Date**, **Customer**, **Company**, and **Light Engine** part number to customize the report.
- 3 Click on the white box under **Add Company Logo** to include a logo in the report (*optional*).
- 4 Select the desired logo (.jpg) in the file browser and click **Open** (*optional*).
- 5 Click **Generate Report**, the default web browser will open and display a preview of the print (shown in Figure 17).

*Note: Arkalumen recommends using Google Chrome and setting margins to **None** in the printing options.*



DMX Configuration	
Base Address :	001
Error Rejection Level :	1
DMX Scheme:	2

DMX Summary:
DMX ADR 1: Red, DMX ADR 2: Green, DMX ADR 3: Blue, DMX ADR 4: White

Figure 17: Example of the first page of a generated report



If at any time you have comments or suggestions regarding the APT Programmer or APT Controller, please click on the **Feedback** tab in the top menu bar to submit information to our team. We appreciate all feedback and are committed to continuously improving our products. For immediate support, please contact the Arkalumen team at 1-877-856-5533 or email support@arkalumen.com

Arkalumen designs and manufactures intelligent LED controllers and custom LED modules for light fixture manufacturers in order to enable energy efficient and feature rich lighting solutions. For over 10 years, **Arkalumen** has focused on simple, flexible, cost effective solutions that allow highly differentiated fixtures to be launched in commercial, industrial, and residential markets. With 30+ patents, we have a history of driving innovation within the lighting industry and are proud to push the limits of what lighting in applications in education, healthcare, film and horticulture can be.

Proudly engineered and assembled in North America.

Visit [Arkalumen.com](https://arkalumen.com) to see our full product portfolio



For any further support please contact Arkalumen
support@arkalumen.com
toll free at 1.877.865.5533

arkalumen

[Arkalumen.com](https://arkalumen.com)

Rev: 1 Edited: February 25th 2022