



APT-CC-VTR-BT-WvC MODULES



Features

- > APT-CC-VTR controllers translate wireless control signals in order to control standard 0-10V dimmable constant current drivers
- > Powered directly from the same output of the constant current driver as the LEDs, no auxiliary power source is required
- > Wireless BLE Mesh to 0-10V (WvC) versions available with Silvair BLE Mesh (WSC) or Casambi BLE Mesh (WCC)
- > Designed in a bolt (BT) form factor to allow for installation in any 0.75" cutout

Ordering Information

Product Code	Description
APT-CC-VTR -BT-WvC- <i>www</i>	VTR – Translator version BT – Bolt form factor WvC – Wireless BLE Mesh to 0-10V translation version, (<i>WCC – Casambi BLE Mesh, WSC – Silvair BLE Mesh</i>) www – Internal code provided by Arkalumen as a simplified configuration code for repeat orders

System Architecture

Design Requirements
1. System requires the use of constant current drivers equipped with an isolated 0-10V dimming port.
2. APT controllers are designed to work with a wide range of drivers, but a fixture manufacturer must test the APT controller for driver compatibility and ensure proper system operation before installation
3. Contact Arkalumen for information on compatibility of drivers and overall system architectures. The light fixture manufacturer is responsible for testing of all third party components and the overall system before installation.

Contact Arkalumen for technical support at support@arkalumen.com

Arkalumen Products may be covered by patents in the US and elsewhere.
www.arkalumen.com/patents

Mechanical Specifications

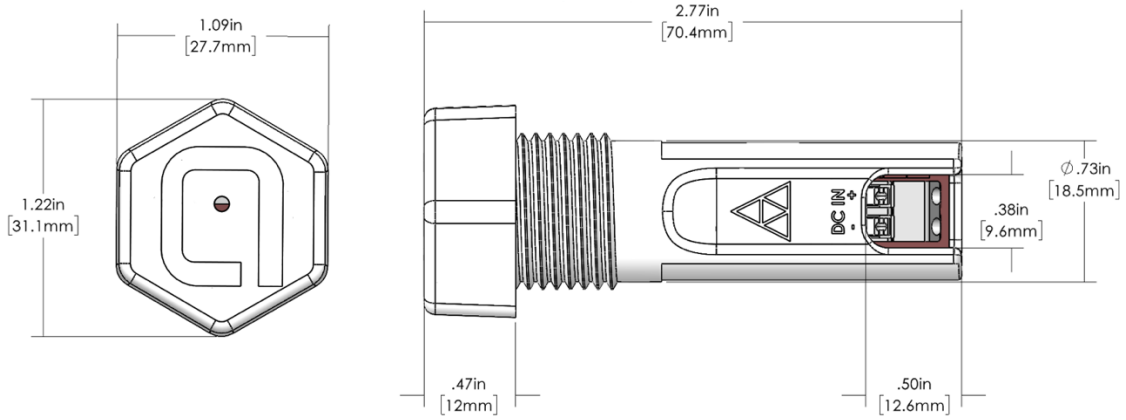


Figure 1 - APT-CC-VTR-BT-WvC Mechanical Drawing

Dimensions	Inches
Length	2.77
Width	1.09
Height	1.22

Electrical Specifications

Input

Port	Voltage		V	Current		mA	Power	
	Min	Max		Min	Max		Min	Max
DC IN +/-	24	60		5	12		0.12	0.72

Output

Port	Voltage		V	Current		μA	Power	
	Min	Max		Min	Max		Min	Max
DIM +/-	0	12		0	90		-	-

Wiring Diagram

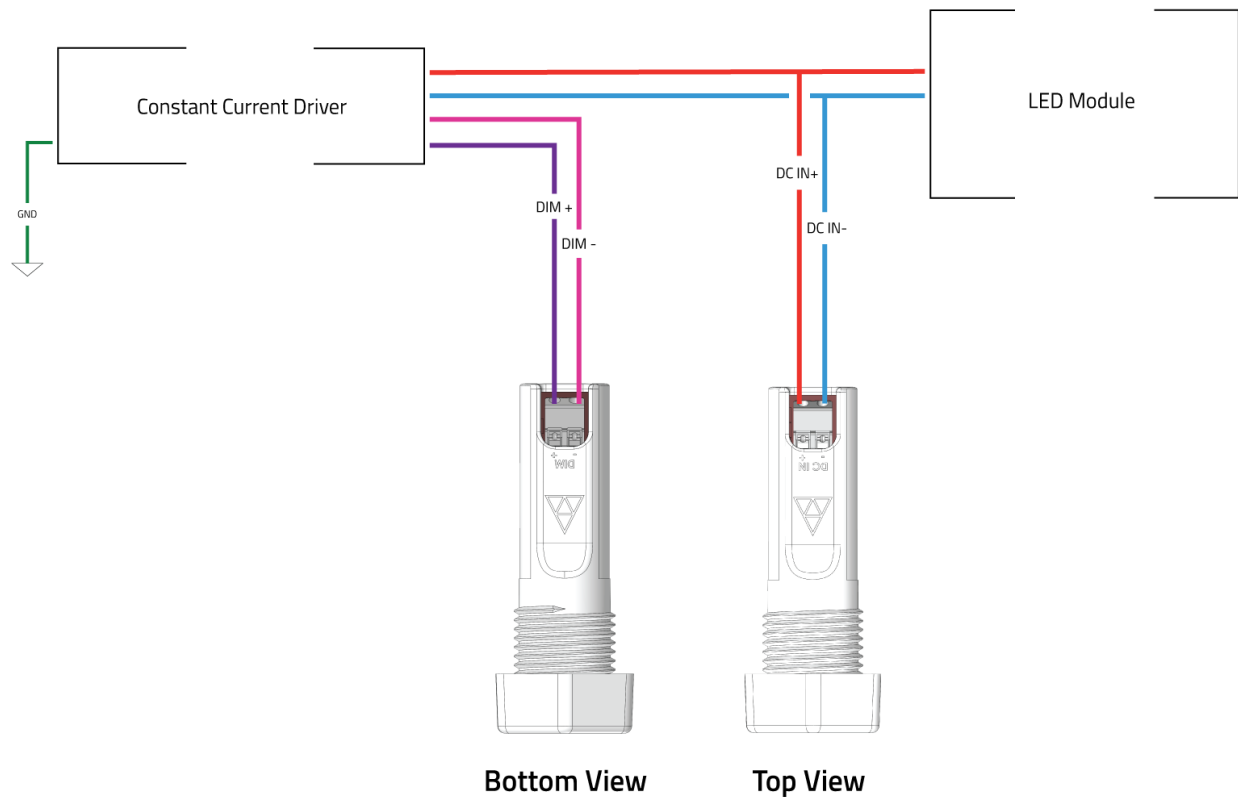


Figure 2 - APT-CC-VTR-BT-WvC Wireless BLE to 0-10V Configuration

Ordering Information

Product Code	Description
APT-CC-VTR-BT-WvC-wwww	VW – Wireless BLE BT – Bolt form factor WvC – Wireless BLE Mesh to 0-10V translation version, <i>(WCC – Casambi BLE Mesh, WSC – Silvair BLE Mesh)</i> wwww – Internal code provided by Arkalumen as a simplified configuration code for repeat orders

Configuration Code	Description
nnn-ppp-0000-0000	nnn – Wireless communication source ppp – Output control protocol 0000 – Max current determined by driver 0000 – Min current determined by driver

Configuration Code Details

Code	Description	Option	Configuration Trait
nnn	nnn denotes the wireless communication source implemented.	CBM	Wireless via Casambi BLE Mesh
		SBM	Wireless via Silvair BLE Mesh
ppp	ppp denotes the output control protocol enabled on the controller.	DIM	0-10V output control protocol

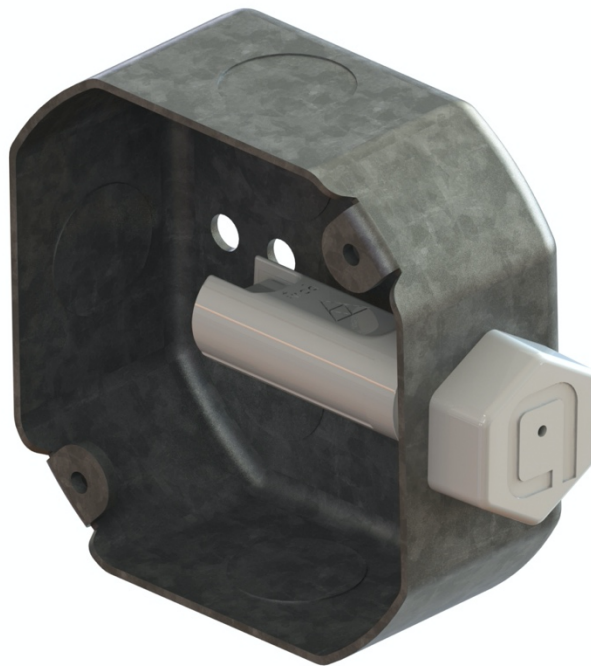


Figure 3 - APT-CC-VTR-BT-WvC Sample installation in junction box